

Link Controls Ltd.

Stuart Road, Manor Park, Runcorn, WA7 1TS

Tel: +44(0)1928 579050

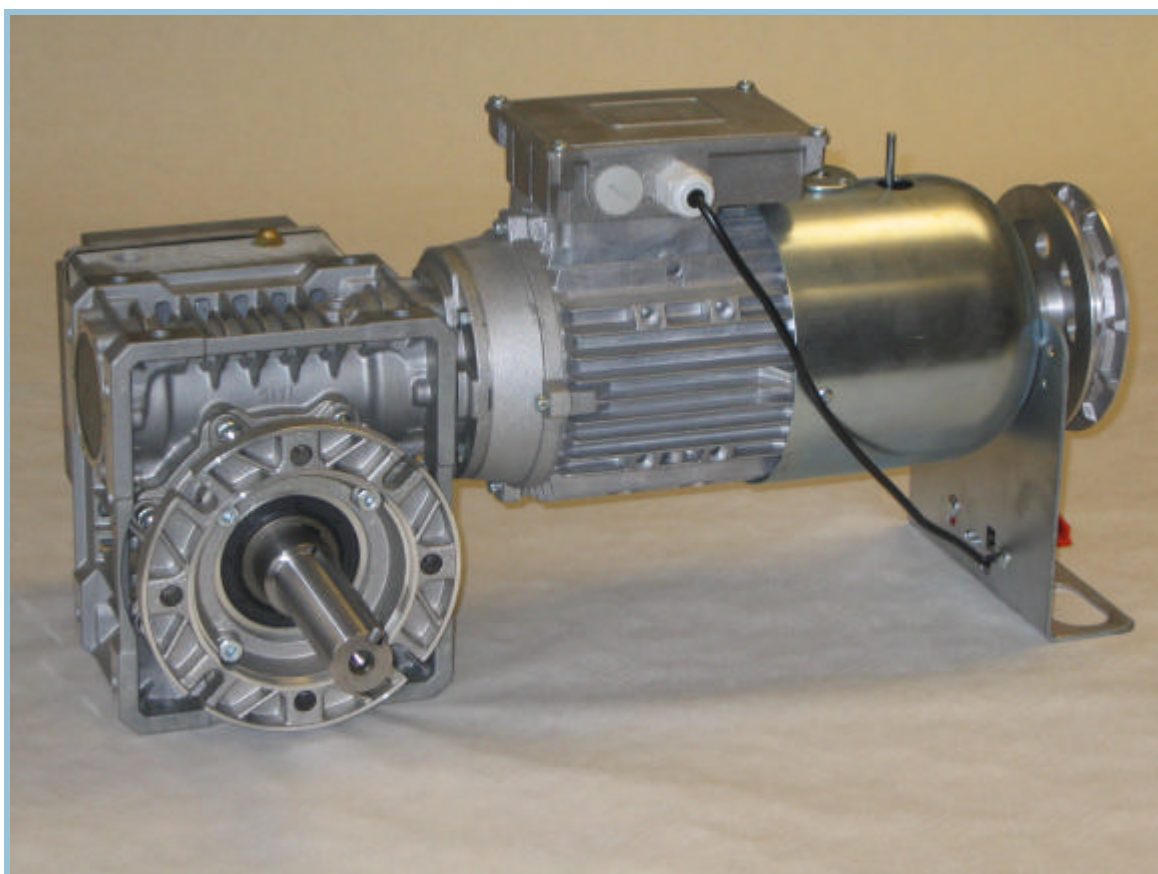
www.link-controls.co.uk

Fax: +44(0)1928 579259

sales@link-controls.co.uk

CDO-200

Flangemount Operator



Special Features

- * Safety Interlock Switch for manual operation
- * Integral Thermal Protection
- * IP 54 Environment Protection
- * Gear driven Limit Switches
- * Phosphor bronze Worm Wheel
- * High Starting Torque Industrial Duty Motor
- * Integral Brake

PRODUCT DESCRIPTION

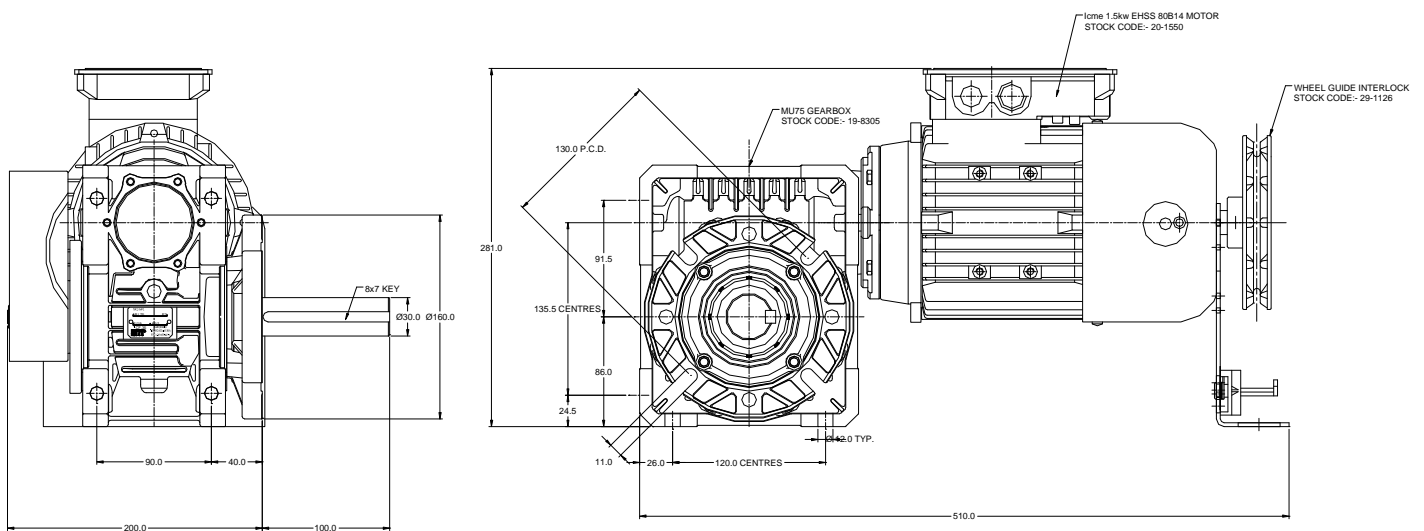
The CDO-200 Rolling Door Operator is available with 1.5kw, 400v Three Phase Brake Motor or 0.75kw, 230v Single Phase Motor. These models can be fitted with a Hand Crank or High Level Hand Chain System which enables the roller shutter door to be manually opened & closed when required.

TECHNICAL INFORMATION & ORDER CODES

Data \ Type	CDO-200 3PH c/w Hand Crank	CDO-200 3PH c/w High Level Hand Chain	CDO-200 1PH c/w High Level Hand Chain
Power (kW)	1.5	1.5	0.75
Torque (Nm)	300	300	200
Output Speed (R.P.M.)	24	24	24
Environmental Protection	I.P.54	I.P.54	I.P.54
Current (Amps)	3.2	5.2	5.2
Power Supply	400v/3ph/50Hz	400v/3ph/50Hz	230v/1ph/50Hz
Order Code	21-0922	21-0920	21-0940

OPERATOR DIMENSIONS

TYPE:- CDO-200 3ph c/w High Level Hand Chain



Dimension drawings of other types are available on request



Link Controls Limited
INDUSTRIAL DOOR AND GATE OPERATORS
ACCESS CONTROL & SECURITY EQUIPMENT

Stuart Road, Manor Park, Runcorn WA7 1TS
Tel: 01928 579050 Fax: 01928 579259
Email: sales@link-controls.co.uk
Web: www.link-controls.co.uk