

Link Controls Ltd.

Stuart Road, Manor Park, Runcorn, WA7 1TS
Tel: +44(0)1928 579050 Fax: +44(0)1928 579259
www.link-controls.co.uk sales@link-controls.co.uk

CDO-300

Flangemount Operator



Special Features

- * Safety Interlock Switch for Manual Operation
- * Integral Thermal Protection
- * I.P. 54 Environment Protection
- * Gear Driven Limit Switches
- * Phosphor Bronze Worm Wheel
- * High starting Torque—Industrial Duty Motor

PRODUCT DESCRIPTION

The CDO-300 Rolling Door Operator is available with a 2.2kw, 400v Three Phase Brake Motor. This model can be fitted with a Hand Crank or High Level Hand Chain System which enables the roller shutter door to be manually opened & closed when required.

TECHNICAL INFORMATION & ORDER CODES

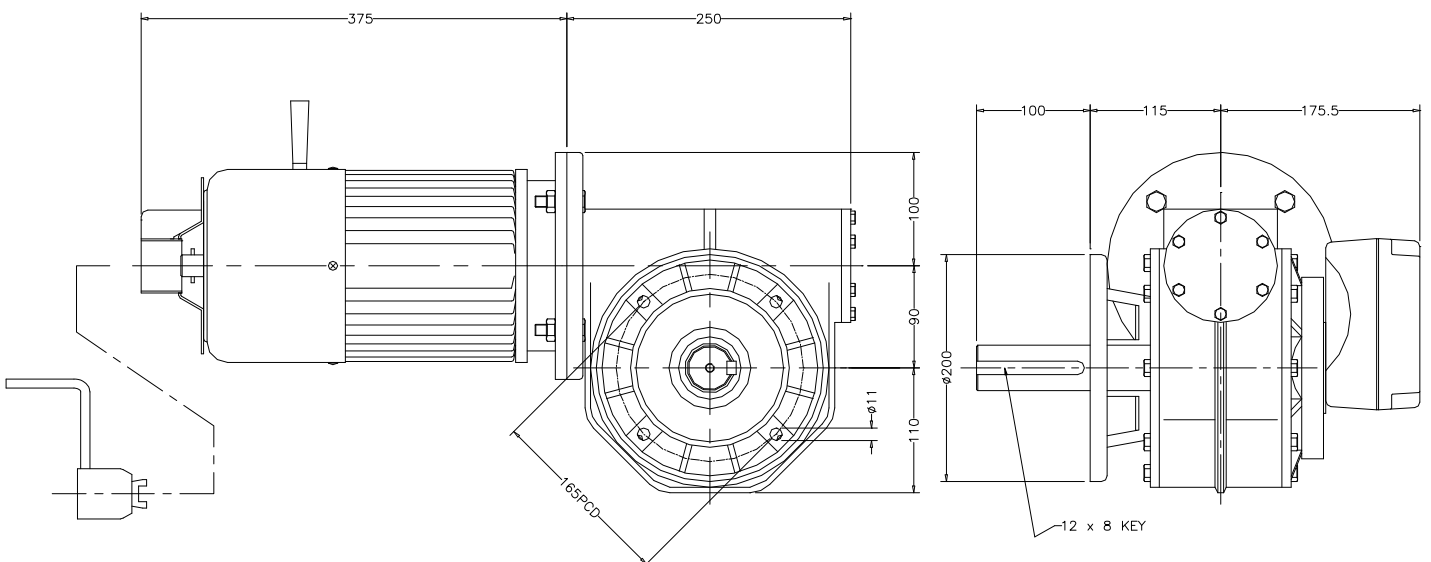
Data \ Type	CDO-300 c/w Hand Crank	CDO-300 c/w High Level Hand Chain
Power (kW)	2.2	
Torque (Nm)	518	
Output Speed (R.P.M.)	28	
Environmental Protection	I.P.54	
Current (Amps)	6.4	
Power Supply	400v/3ph/50Hz	
Order Code	21-0952	21-0950

OPERATOR DIMENSIONS

TYPE:- CDO-300 c/w Hand Crank

ORDER CODE

21-0952

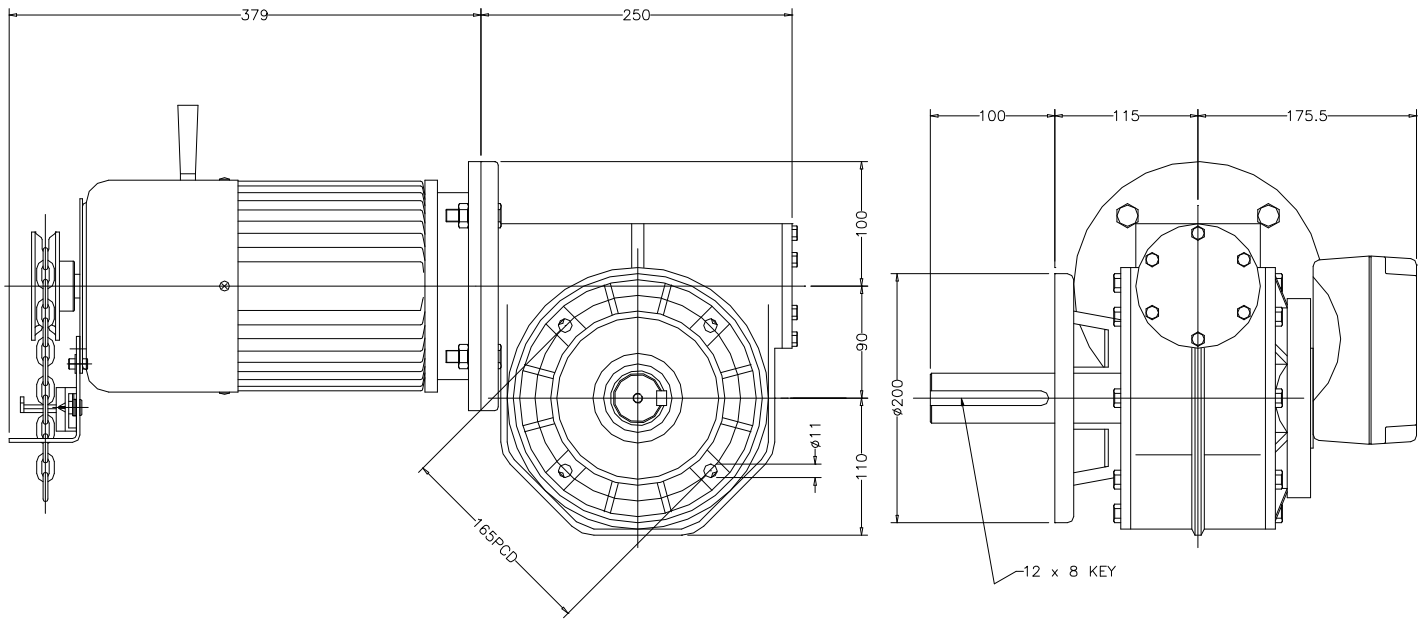


OPERATOR DIMENSIONS

ORDER CODE

21-0950

TYPE:- CDO-300 c/w High Level Hand Chain



Link Controls Limited
INDUSTRIAL DOOR AND GATE OPERATORS
ACCESS CONTROL & SECURITY EQUIPMENT

Stuart Road, Manor Park, Runcorn WA7 1TS
Tel: 01928 579050 Fax: 01928 579259
Email: sales@link-controls.co.uk
Web: www.link-controls.co.uk