

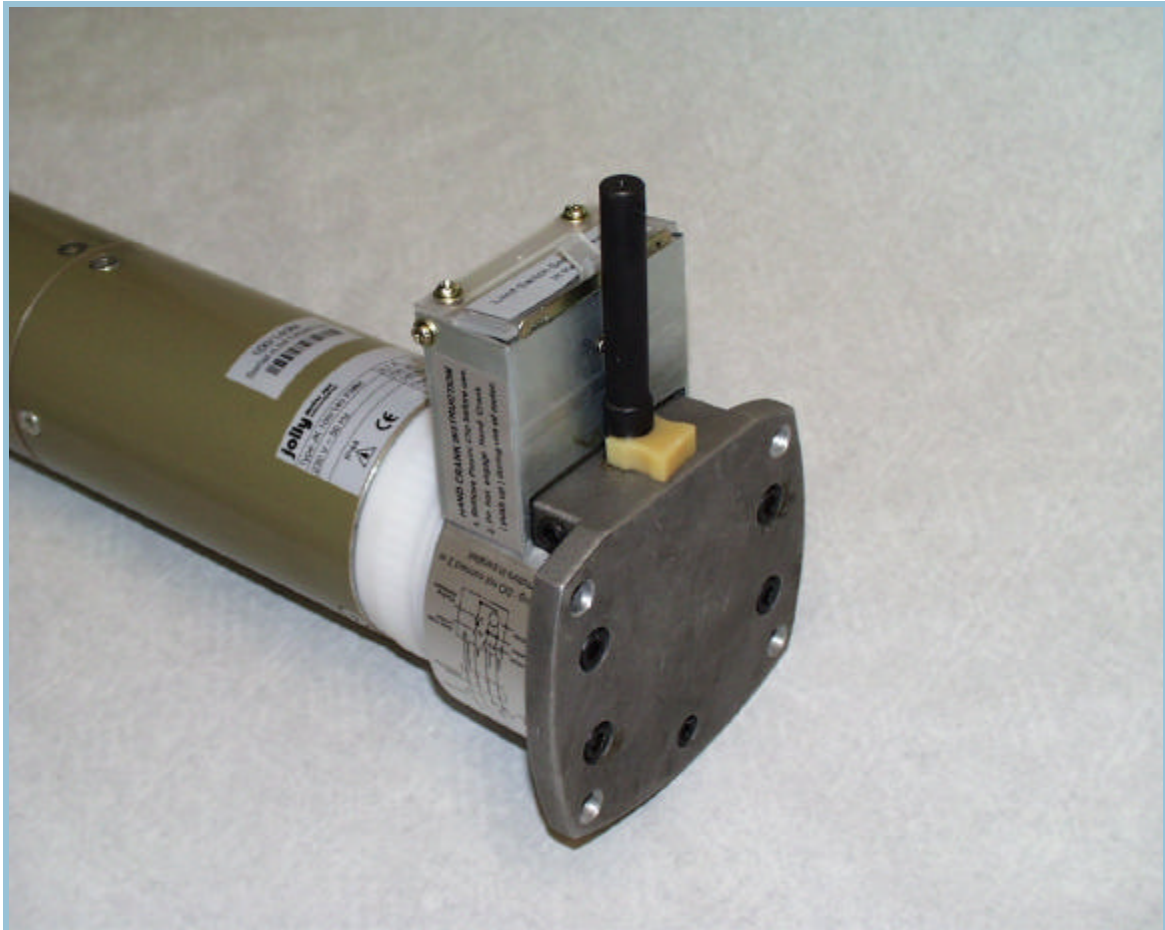


Link Controls Ltd.

Stuart Road, Manor Park, Runcorn, WA7 1TS
Tel: +44(0)1928 579050 Fax: +44(0)1928 579259
www.link-controls.co.uk sales@link-controls.co.uk

Series 100 Tubular Motors

Heavy Duty Shutters and Grilles



Special Features

- * 230v 1ph 50Hz Motor
- * Integral Thermal Trip
- * Manual Override (FMM)
- * 'Flick' Limit Switches
- * Identical Fixing to Series 8

PRODUCT DESCRIPTION

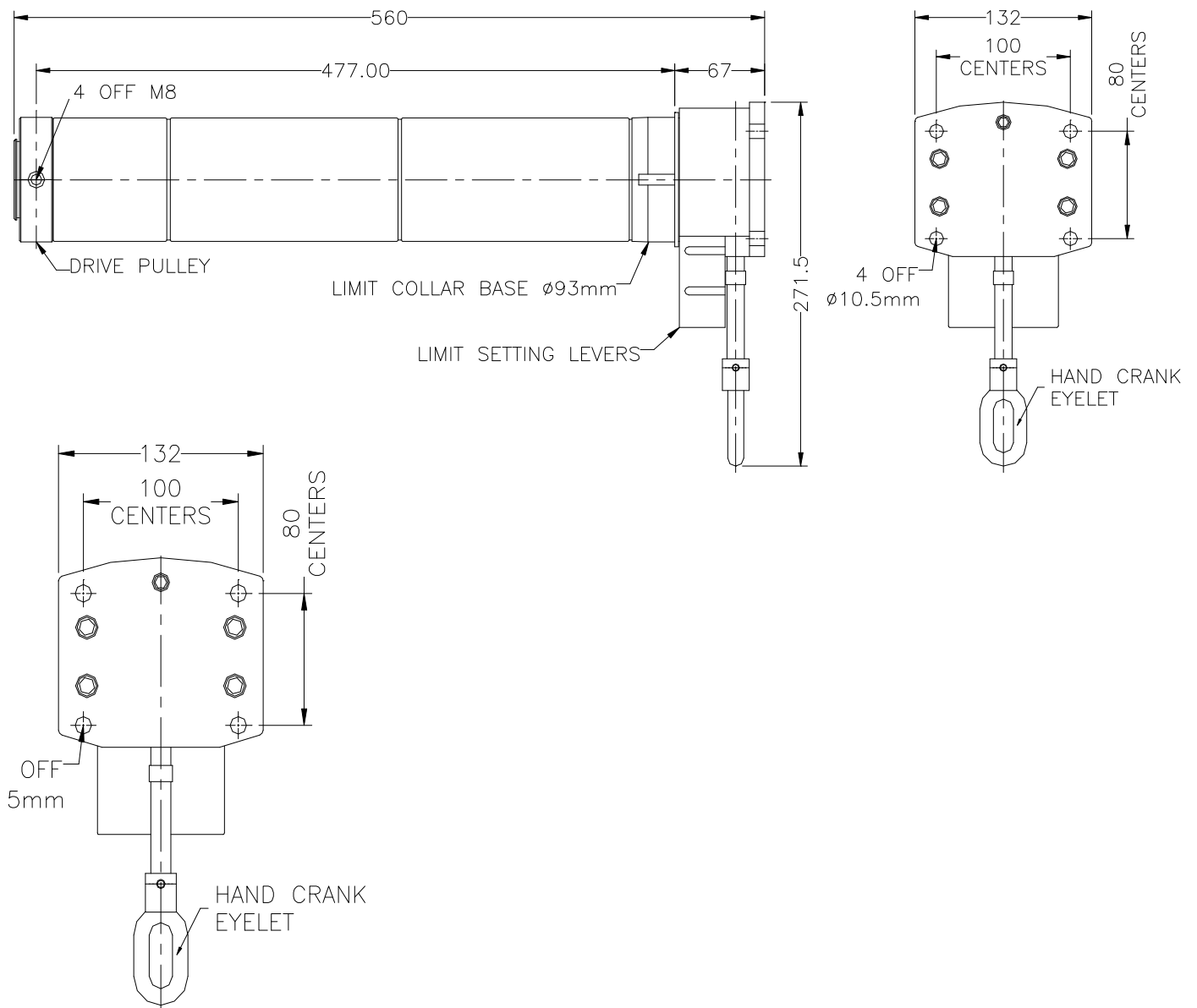
The 100 Series tubular motor range includes the models JK100/160, JK100/180 and JK100/230 all of which are available with Manual Override . The 100 Series is suitable for Heavy Duty Grilles and Shutters.

TECHNICAL INFORMATION

MODEL	TORQUE	SPEED	LIFTING CAPACITY (KG)		POWER	CURRENT	LIMIT TRAVEL
	NM		RPM	100 (4")			
JK100/160	160	12	230	184	700	3.3	16 Turns
JK100/180	180	12	260	208	750	3.4	16 Turns
JK100/230	230	12	330	265	870	3.8	16 Turns

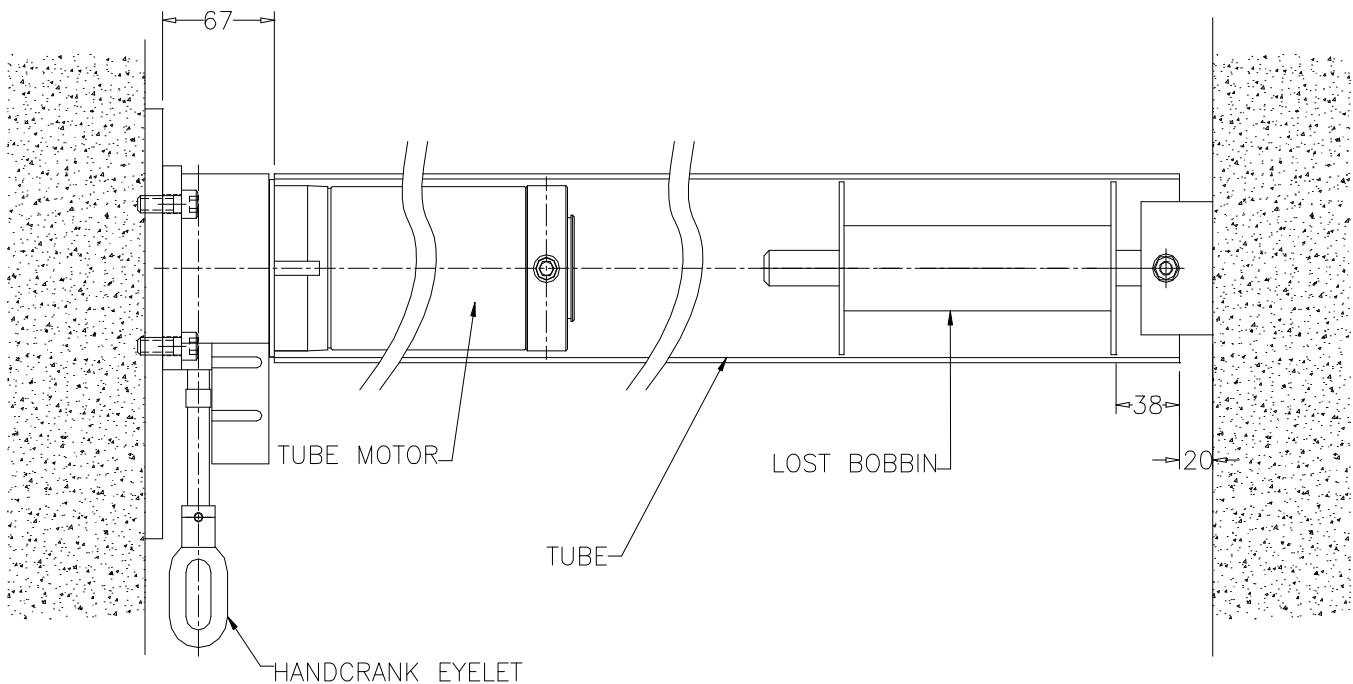
OPERATOR DIMENSIONS

JK100/160, JK100/180 and JK100/230



TYPICAL INSTALLATION

JK100/160, JK100/180 and JK100/230



TUBE PROFILES

As standard the Series 100 range is available with adaptors to suit 4" 16 swg, 4" 9swg and 5" 10swg tube. For details contact our Sales Office.

	TUBE ID	TUBE OD
4" 16 SWG	98	102
4" 9 SWG	95	102
5" 10 SWG	120	127



Link Controls Limited
INDUSTRIAL DOOR AND GATE OPERATORS
ACCESS CONTROL & SECURITY EQUIPMENT

Stuart Road, Manor Park, Runcorn WA7 1TS
Tel: 01928 579050 Fax: 01928 579259
Email: sales@link-controls.co.uk
Web: www.link-controls.co.uk