



Link Controls Ltd.

Stuart Road, Manor Park, Runcorn, WA7 1TS
Tel: +44(0)1928 579050 Fax: +44(0)1928 579259
www.link-controls.co.uk sales@link-controls.co.uk

Series 115 Tubular Motors Industrial Shutters and Grilles



Special Features

- * 230v 1ph 50Hz Motor
- * Integral Thermal Trip
- * Manual Override (FMM)
- * Limit Switches Adjustable by Screwdriver

PRODUCT DESCRIPTION

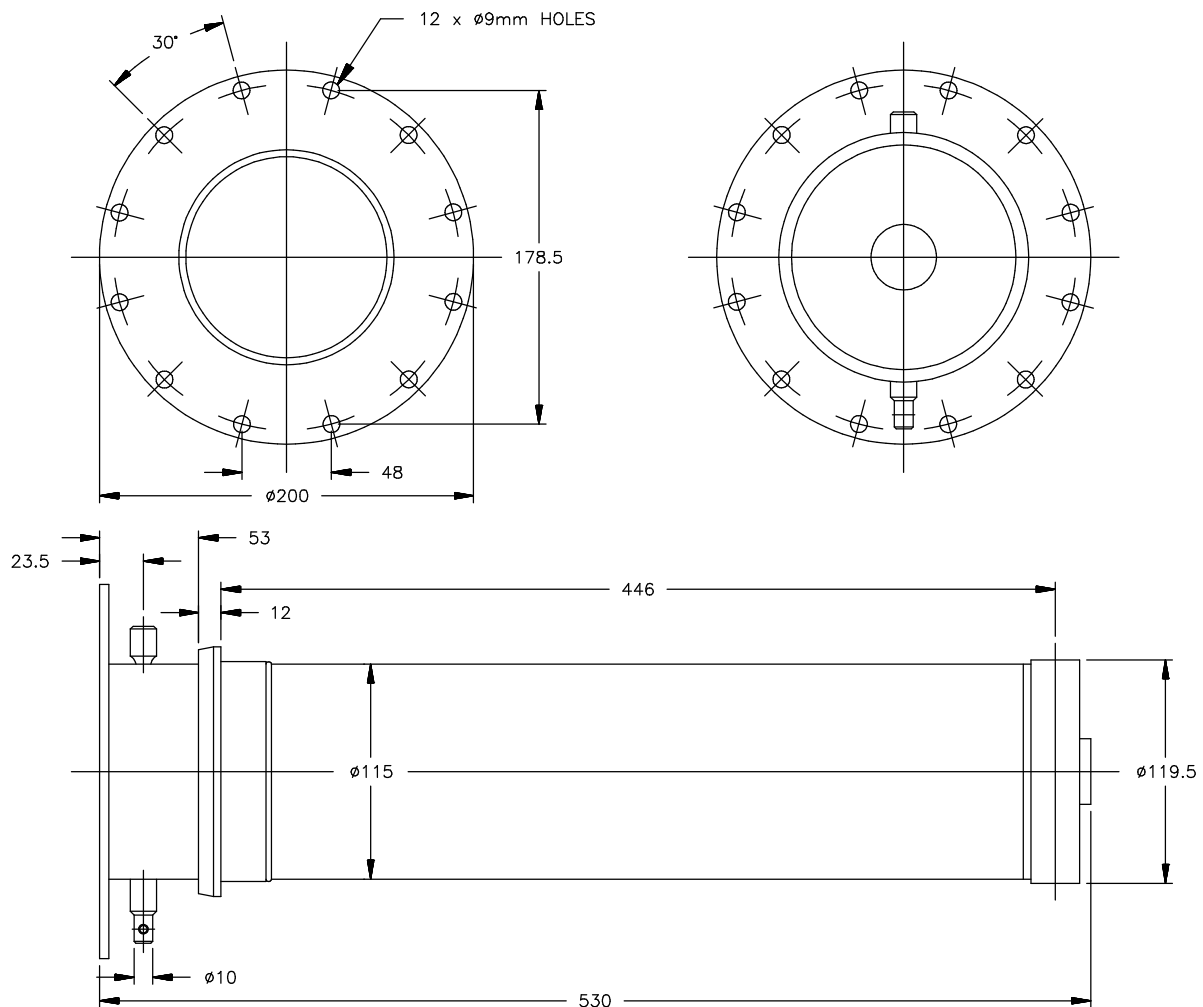
The 115 Series tubular motor range includes the models JM115/250, JM115/350 and JM115/500 which are available with Manual Override (FMM). The 100 Series is suitable for Industrial Grilles and Shutters.

TECHNICAL INFORMATION

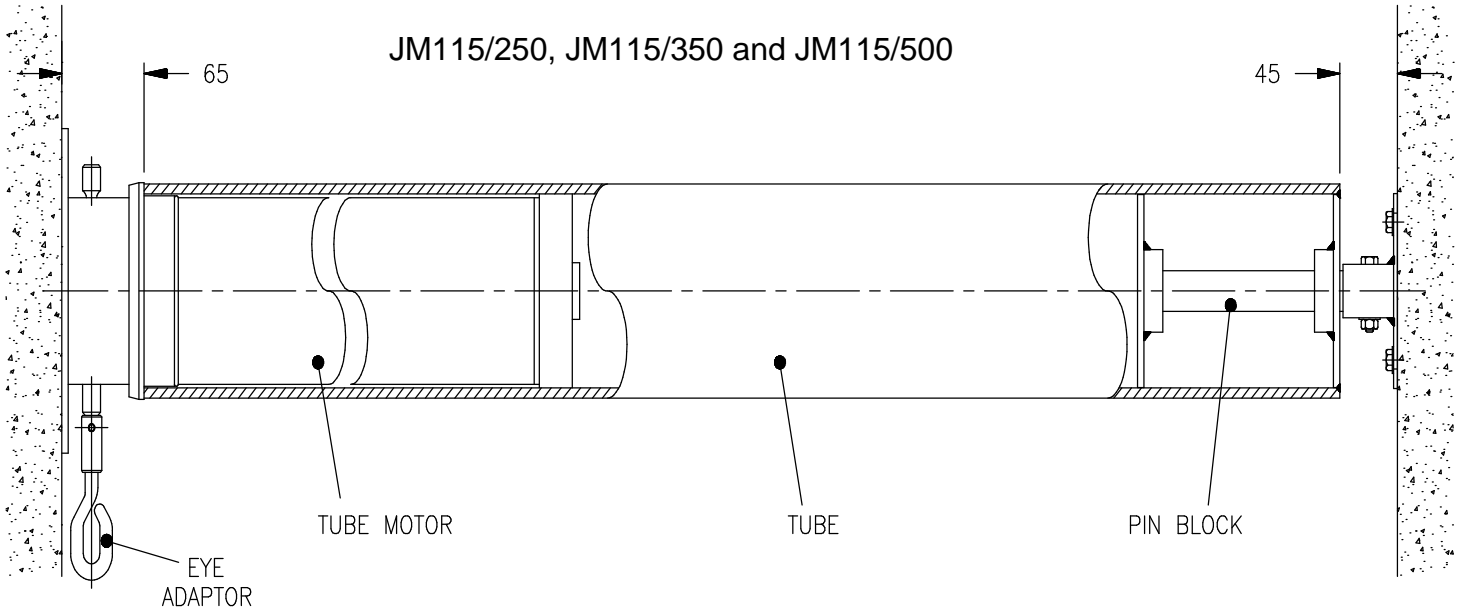
MODEL	TORQUE	SPEED	LIFTING CAPACITY (KG)	POWER	CURRENT	LIMIT TRAVEL
	NM	RPM	TUBE DIA. (MM)	WATTS	AMPS	REVS
JM115/250	250	12	275	750	3.4	12 Turns
JM115/350	350	12	350	1200	5.5	12 Turns
JM115/500	500	12	450	1350	7.2	12 Turns

OPERATOR DIMENSIONS

TYPE:- JM115/250, JM115/350 and JM115/500



TYPICAL INSTALLATION



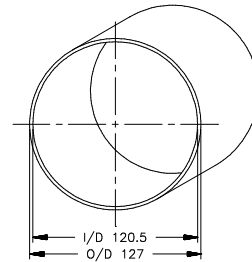
TUBE PROFILES

As standard the Series 115 range is available with adaptors to suit 5" 10 swg tube.

Adaptors for different contoured tubes and other tube profiles are available.

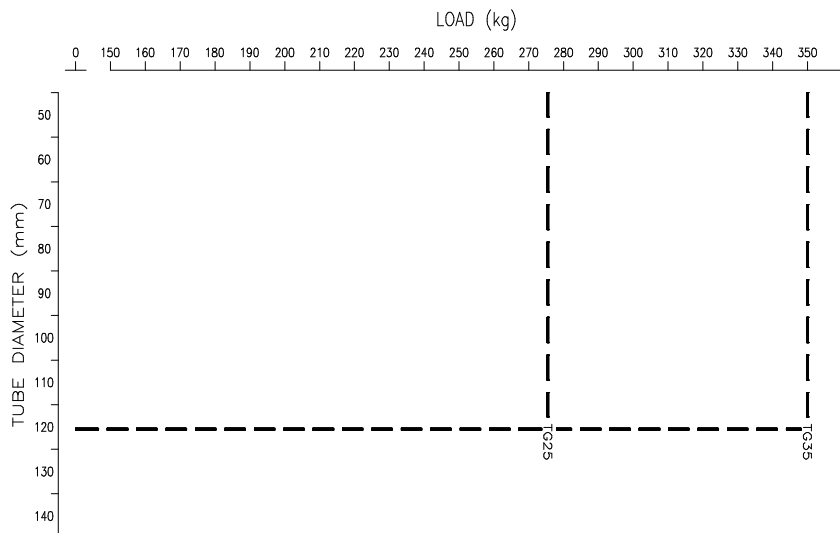
For details contact our Sales Office.

5" 10swg TUBE



SELECTION

The Selection Chart given includes for a safety factor of 30%.



Link Controls Limited
INDUSTRIAL DOOR AND GATE OPERATORS
ACCESS CONTROL & SECURITY EQUIPMENT

Stuart Road, Manor Park, Runcorn WA7 1TS
Tel: 01928 579050 Fax: 01928 579259
Email: sales@link-controls.co.uk
Web: www.link-controls.co.uk