

Link Controls Ltd.

Stuart Road, Manor Park, Runcorn, WA7 1TS
Tel: +44(0)1928 579050 Fax: +44(0)1928 579259
www.link-controls.co.uk sales@link-controls.co.uk

VRL-8

Flangemount Operator



Special Features

- * Safety Interlock Switch for Manual Operation
- * Integral Thermal Protection
- * IP 54 Environment Protection
- * Gear Driven Limits Switches
- * Phosphor Bronze Worm Wheel
- * High Starting Torque—Industrial Duty Motor

PRODUCT DESCRIPTION

The VRL-8 Rolling Door Operator is supplied with a 1.5kw, 400v Three Phase Brake Motor. This model can be fitted with a Hand Crank or Floor Level Hand Chain System which enables the roller shutter door to be manually opened & closed when required.

TECHNICAL INFORMATION & ORDER CODES

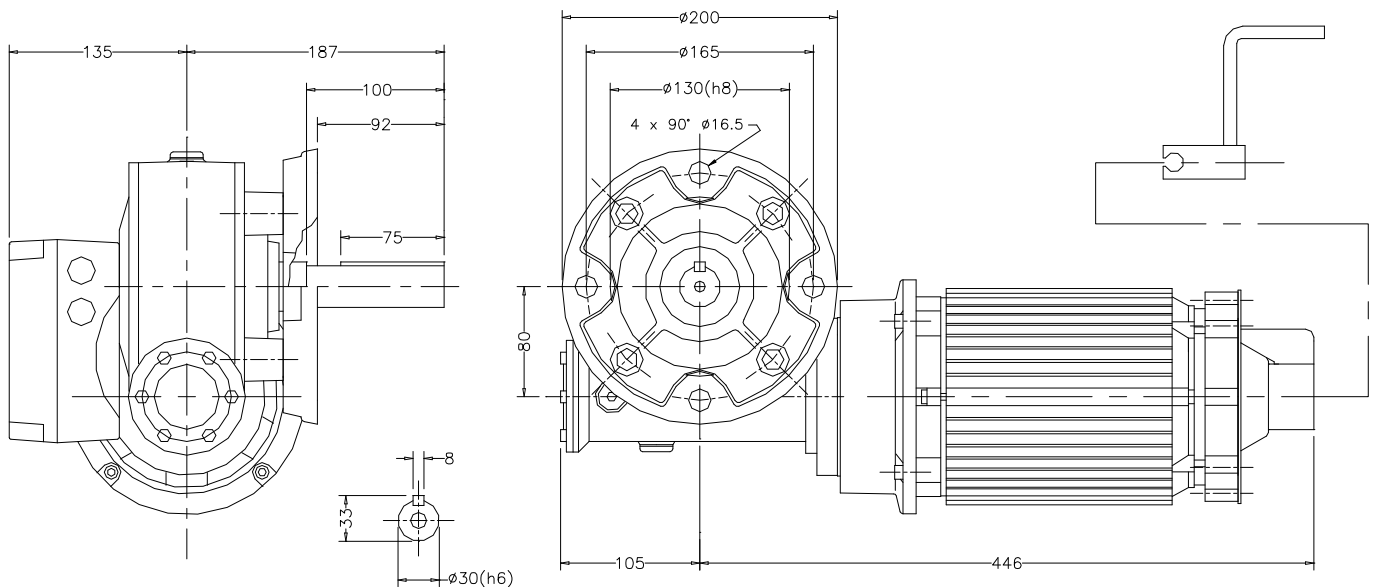
Data \ Type	VRL-8 c/w Hand Crank	VRL-8 c/w Floor Level Hand Chain
Power (kW)	1.5	1.5
Torque (Nm)	300	300
Output Speed (R.P.M.)	24	24
Environmental Protection	I.P.54	
Current (Amps)	5.4	
Power Supply	400v/3ph/50Hz	
Order Code	21-0150	21-0151

OPERATOR DIMENSIONS

TYPE:- VRL-8 c/w Hand Crank

ORDER CODE

21-0150

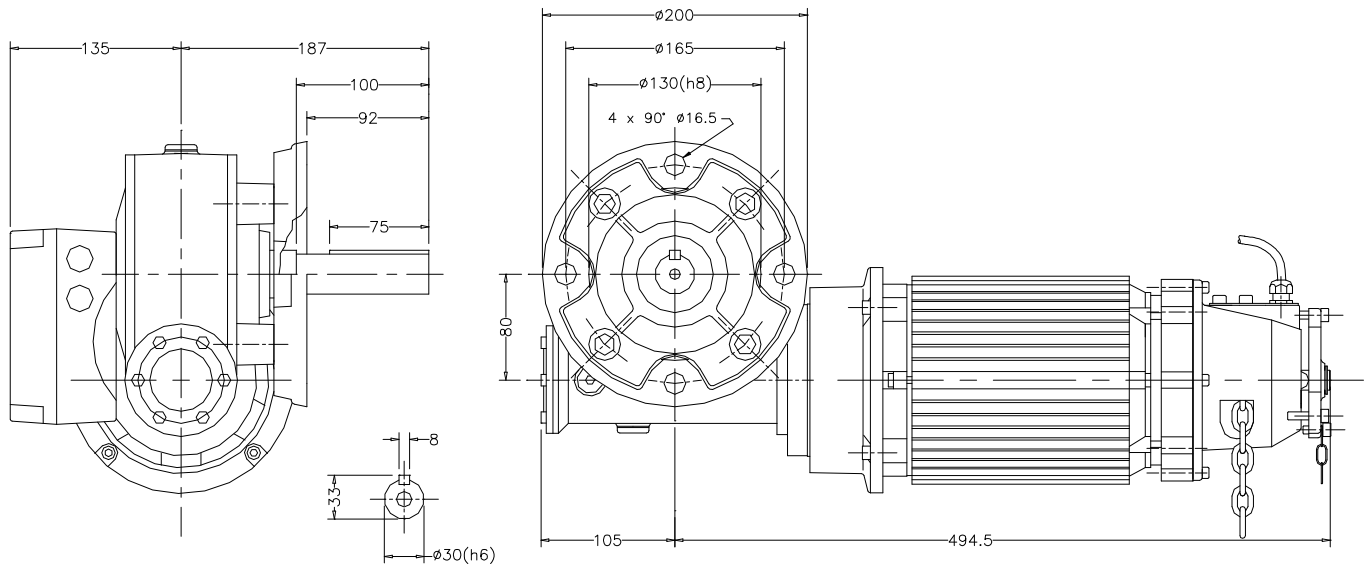


OPERATOR DIMENSIONS

ORDER CODE

21-0151

TYPE:- VRL-8 c/w Floor Level Hand Chain



Link Controls Limited
INDUSTRIAL DOOR AND GATE OPERATORS
ACCESS CONTROL & SECURITY EQUIPMENT

Stuart Road, Manor Park, Runcorn WA7 1TS
Tel: 01928 579050 Fax: 01928 579259
Email: sales@link-controls.co.uk
Web: www.link-controls.co.uk